

MonnitLink™ USB Gateway



Quick Start Guide for Use With Monnit Express Software

Before Inserting the USB

Visit <http://www.monnit.com/support/downloads/> to download the required drivers and software.

1. Download and install the MonnitLink USB driver.
2. Download and install the Monnit Gateway application.

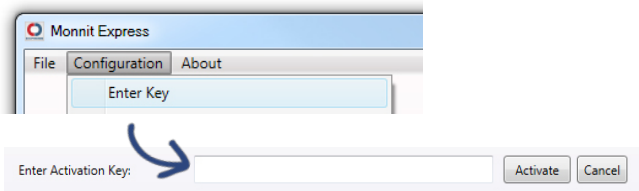
Using with Monnit Express (PC Software)

- Visit <http://www.monnit.com/support/downloads/> to download and install the iMonnit Express software.

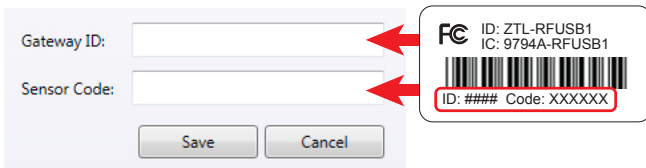
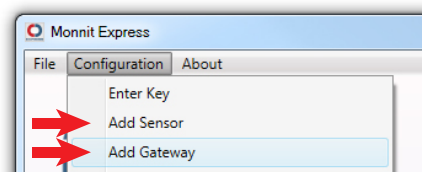
- Launch the iMonnit Express software.



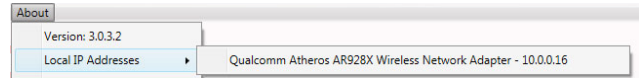
- Activate the Express software with the code you received when purchasing.



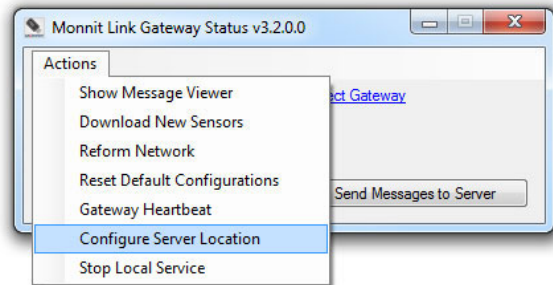
- Add the gateway and wireless sensors to the software.



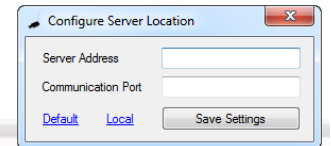
- Click on “About”, then “Local IP Addresses” and make note of the IP address that your computer is using on your network.



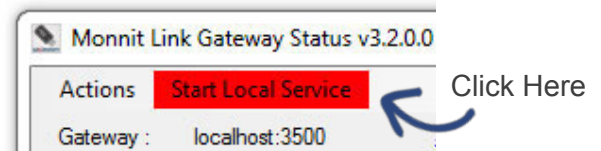
- Launch the MonnitLink Gateway application.
- Click “Actions” then “Configure Server Location”.



- Enter the IP address from iMonnit Express into the server address box, and use 3000 as the default communication port, then click save.



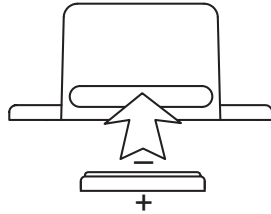
- Start the gateway’s local service.



- Plug the USB gateway into your PC, and check that it changes to active in iMonnit Express.



- Insert batteries into the wireless sensors.



- Check that the sensors change to active.



For more detailed instructions, documentation, “how-to” guides and video demonstrations on using iMonnit, iMonnit Express and Monitoring software and Monnit wireless sensors, visit our support page at <http://www.monnit.com/support/>.

MONNIT[®]

Monnit Corporation
4403 South 500 West
Murray, UT 84123
801-561-5555
www.monnit.com